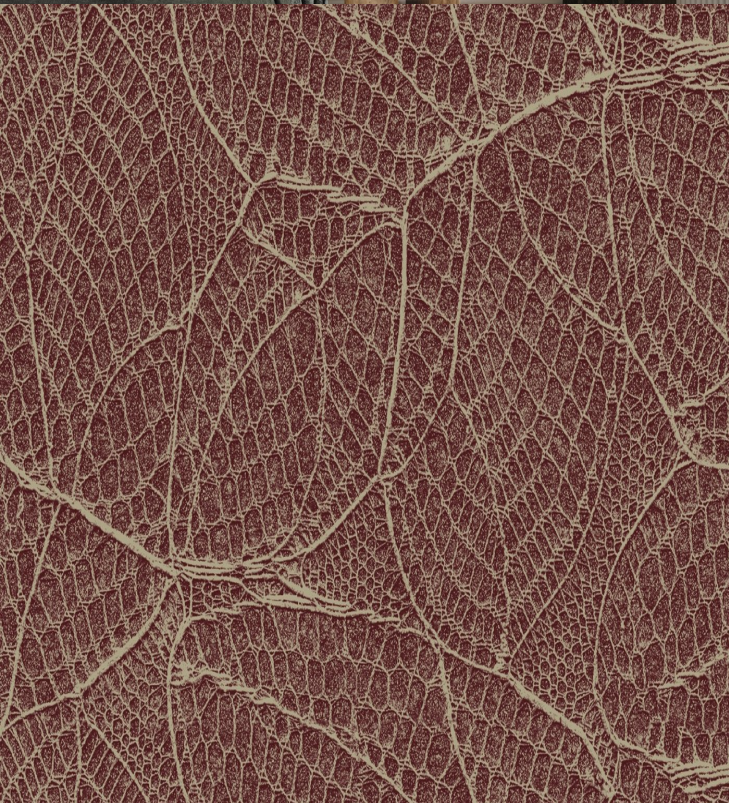
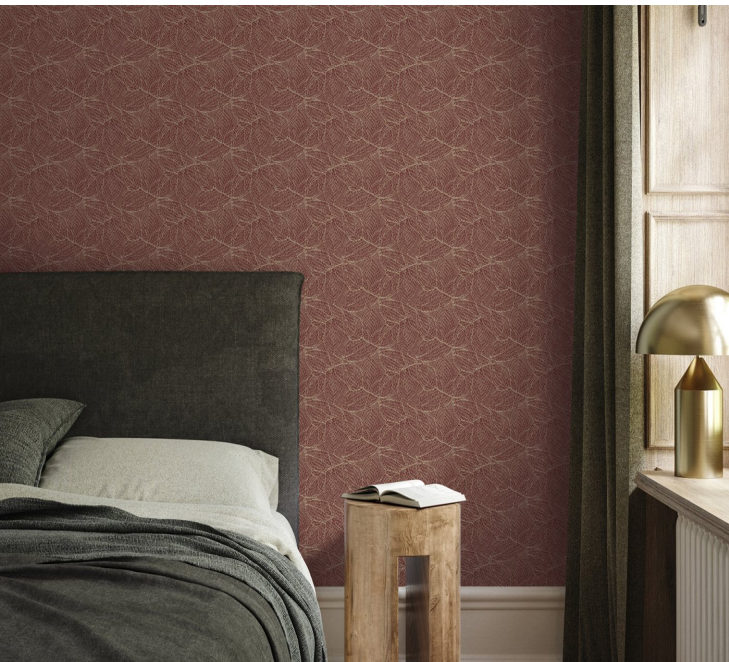


## TECHNICAL DATA SHEET

This delicate and beautiful print, simulating a hand-crocheted lace has a luxurious metallic background, available in several rich colors to display calm radiance. The pattern cleverly captures the intricacy of the lace design and exudes real presence on the wall.



## Product Details

Design:	Cosmia
SKU:	13237
Colour Description:	Red
Width:	130 cm
Length:	30m
Sold By:	Per linear metre
Construction Type:	Fabric backed Vinyl
Backer:	Type I non-woven
Weight:	350gsm
Fire rating:	Euroclass B-s2,d0

## CLEANABILITY

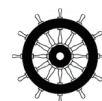


Fully Washable

## CE COMPLIANT



## IMO RATED



BV2690

## IMO RATED



8517

## LIGHTFASTNESS



Very good. (6 out of 8 to BSEN20105)

## VOC RATED

A+

## Hanging Information

Pattern Repeat:	26.7cm
Pattern Offset:	0cm
Pattern Overlap:	5cm
Recommended Adhesive:	Hard spatula and joint cutter

## AVAILABLE COLOURWAYS IN THIS DESIGN

To view the full range of colourways available in this design, please search 'Cosmia' using the search function tool on the Muraspec website.



Overlap &amp; Trim



Paste to wall



By Straight Hanging



Straight Match

If you require further information about any Muraspec product or service please search our website [www.muraspec.com](http://www.muraspec.com), contact us at [customerservices@muraspec.com](mailto:customerservices@muraspec.com) or call +44 (0)3705 117 118