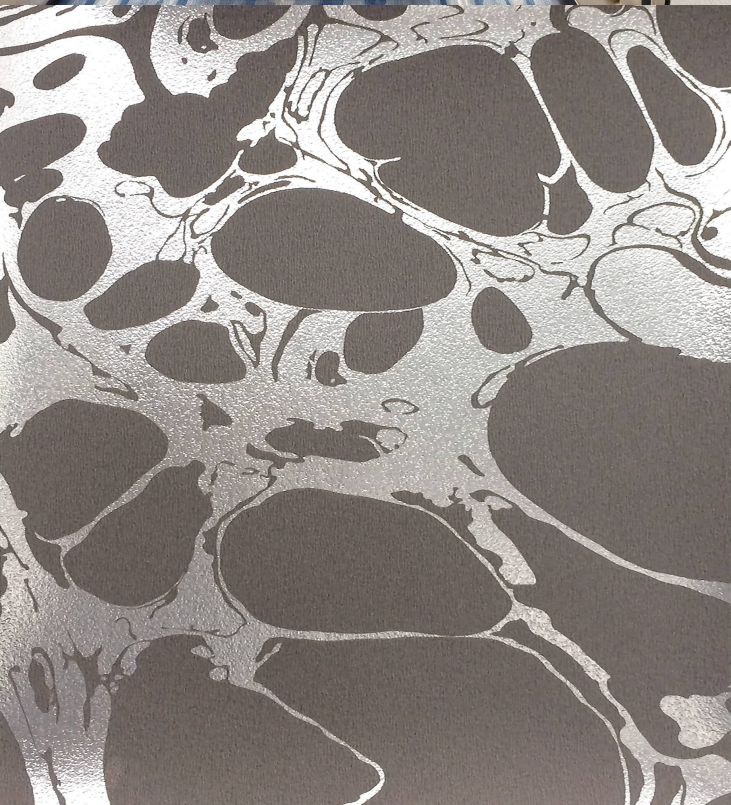


TECHNICAL DATA SHEET

Inspired by an oil and water design technique, Lava combines an oversized foil print with subtle embossed textures for a magnificently bold and contemporary design. This showstopper is characterised by a lustrous palette, including such colours as mink on silver, white on gold and an inky blue on pewter, and demonstrates just how spectacular yet intricate wallcoverings can be.



Product Details

Design:	Lava
SKU:	11060
Colour Description:	Grey
Width:	130 cm
Length:	30 m
Sold By:	per linear metre
Construction Type:	PET Foil
Backer:	Non woven Polyester
Weight:	350gsm Type I (15oz)
Fire rating:	Euro Class B-s2,d0 Other Fire Certifications available include Russian GOST, Australian AS 5637.1, Chinese 8624

CLEANABILITY



Fully Washable

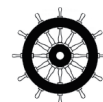
CE COMPLIANT



CONTAINS BIOCIDES



IMO RATED



BV2690

IMO RATED



8517

LIGHTFASTNESS



Very good. (6 out of 8 to BSEN20105)

VOC RATED

A+

Hanging Information

Pattern Repeat:	80cm
Pattern Offset:	40cm
Pattern Overlap:	5cm
Recommended Adhesive:	Felt Edged Spatula. Murabond Heavy. On dry lining use Murabond Easy Strip. On sealed surfaces use Murabond Sealed Surface Adhesive. For other surfaces contact Customer Services on 03705 117 118.

AVAILABLE COLOURWAYS IN THIS DESIGN

To view the full range of colourways available in this design, please search 'Lava' using the search function tool on the Muraspec website.



Paste to wall



By Straight Hanging



Offset Match



Overlap & Trim

If you require further information about any Muraspec product or service please search our website www.muraspec.com, contact us at customerservices@muraspec.com or call +44 (0)3705 117 118