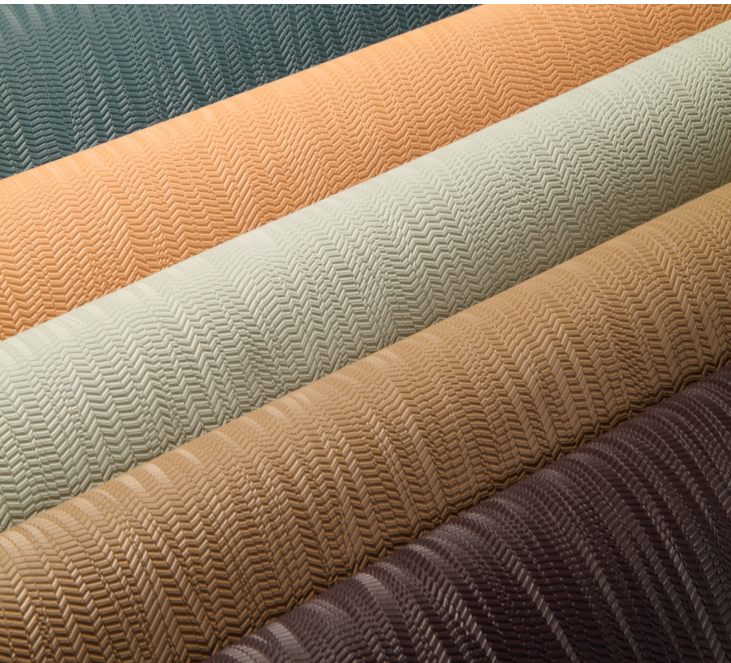


**TECHNICAL DATA SHEET**

For further information please contact customer services on 03705 117 118.



**Product Details**

|                     |                      |
|---------------------|----------------------|
| Design:             | Prairie              |
| SKU:                | 01D13                |
| Colour Description: | Cream                |
| Width:              | 130 cm               |
| Length:             | 30 m                 |
| Sold By:            | Per linear metre     |
| Construction Type:  | Fabric backed Vinyl  |
| Backer:             | Non woven polyester  |
| Weight:             | 410gsm Type I (18oz) |
| Fire rating:        | Euro Class B-s2,d0   |

CLEANABILITY



Extra Scrubbable

CE COMPLIANT



CONTAINS BIOCIDES



IMO RATED



BV2690

IMO RATED



8517

LIGHTFASTNESS



Excellent. (7 out of 8 to BSEN20105)

VOC RATED



**Hanging Information**

|                       |  |
|-----------------------|--|
| Pattern Repeat:       | 0cm  |
| Pattern Offset:       | 0cm  |
| Pattern Overlap:      | 5cm  |
| Recommended Adhesive: | Murabond Heavy. On dry lining use Murabond Easy Strip. On sealed surfaces use Murabond Sealed Surface Adhesive. For other surfaces contact Customer Services on 03705 117 118. |

**AVAILABLE COLOURWAYS IN THIS DESIGN**

To view the full range of colourways available in this design, please search 'Prairie' using the search function tool on the Muraspec website.



Paste to wall



By Reverse Hanging



Random Match



Overlap & Trim

If you require further information about any Muraspec product or service please search our website [www.muraspec.com](http://www.muraspec.com), contact us at [customerservices@muraspec.com](mailto:customerservices@muraspec.com) or call +44 (0)3705 117 118