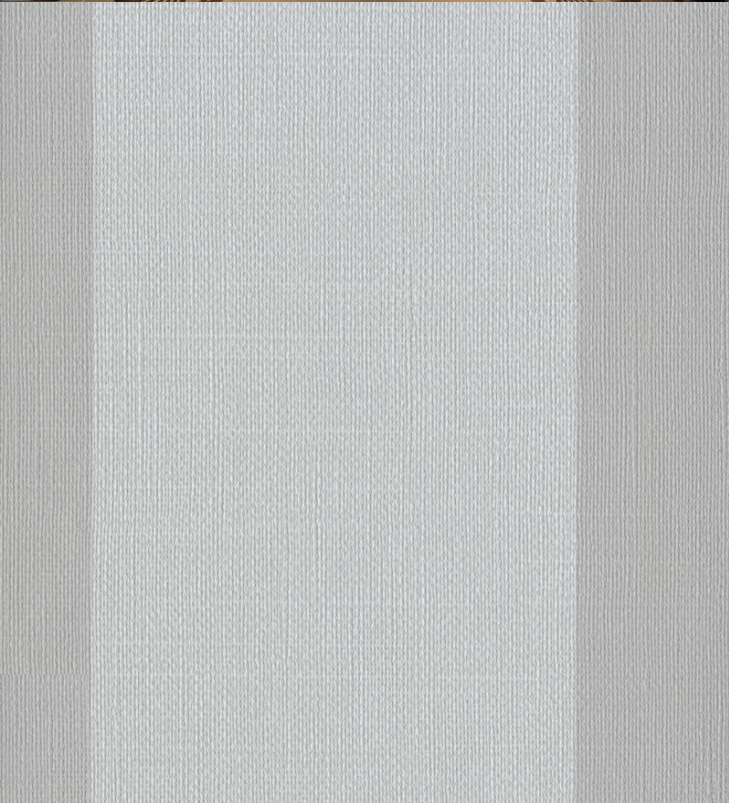


**TECHNICAL DATA SHEET**

For further information please contact customer services on 03705 117 118.



**Product Details**

Design:	Palma Stripe
SKU:	01S89
Colour Description:	Grey
Width:	130 cm
Length:	30 m
Sold By:	Per linear metre
Construction Type:	Fabric backed Vinyl
Backer:	Cotton Scrim
Weight:	410gsm Type I (18oz)
Fire rating:	Euro Class B-s2,d0 Other Fire Certifications available include Russian GOST, Australian AS 5637.1, Chinese 8624

<b>CLEANABILITY</b>	<b>CE COMPLIANT</b>	<b>CONTAINS BIOCIDES</b>	<b>IMO RATED</b>
Extra Scrubbable			BV2690
<b>IMO RATED</b>	<b>LIGHTFASTNESS</b>	<b>VOC RATED</b>	
		<b>A+</b>	
8517	Very good. (6 out of 8 to BSEN20105)		

**Hanging Information**

Pattern Repeat:	0cm
Pattern Offset:	0cm
Pattern Overlap:	16cm
Recommended Adhesive:	Murabond Heavy. On dry lining use Murabond Easy Strip. On sealed surfaces use Murabond Sealed Surface Adhesive. For other surfaces contact Customer Services on 03705 117 118.

**AVAILABLE COLOURWAYS IN THIS DESIGN**  
To view the full range of colourways available in this design, please search 'Palma Stripe' using the search function tool on the Muraspec website.

Paste to wall	By Reverse Hanging	Random Match	Overlap & Trim

If you require further information about any Muraspec product or service please search our website [www.muraspec.com](http://www.muraspec.com), contact us at [customerservices@muraspec.com](mailto:customerservices@muraspec.com) or call +44 (0)3705 117 118